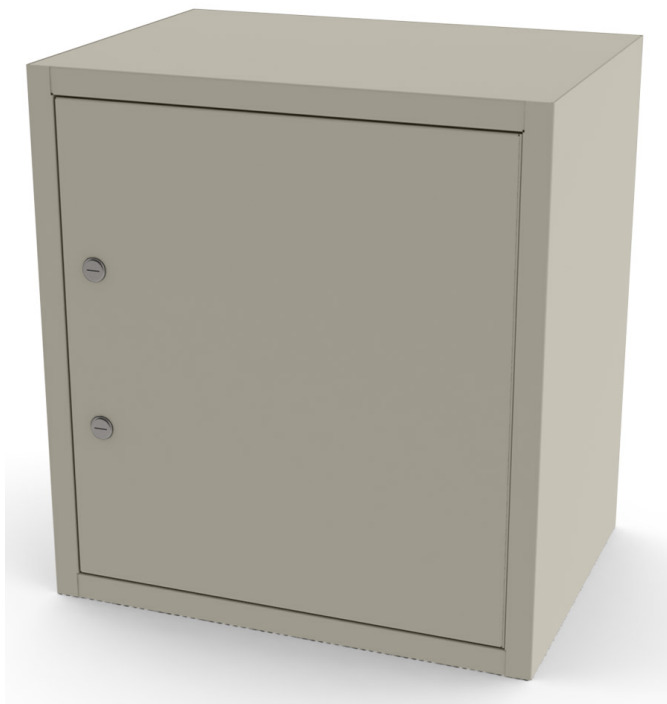


### Single Door, Double Lock Narcotic Cabinet with One Shelf

Five Adjustable Steel Shelves  
20 Gauge Double Wall Door  
20 Gauge Steel Cabinet Construction  
Cam Style Locks  
Two Keys Per Lock  
3 Year Limited Warranty



#### Color Chart and Part Number:

|                      |                         |                |                 |
|----------------------|-------------------------|----------------|-----------------|
| 7785RI<br>River Rock | 7785SN<br>Sand Grey     | 7785MO         | 7785AD<br>Adobe |
| 7785ST<br>Steel Blue | 7785MI<br>Midnight Blue | 7785SG<br>Sage | 7785ON<br>Onyx  |

#### Standard Features

- 20 gauge steel cabinet construction
- 20 gauge double wall door
- Cam-style lock with 2 keys per lock
- Heavy duty piano style door hinge
- Five adjustable shelves
- Available in all UMF Medical colors
- 3 year limited warranty

#### Specifications

- **Width:** 18.625" (47.3cm)
- **Height:** 20.25" (51.4cm)

#### Options

- **Depth:** 13.625" (34.6cm)
- 506 - Master key feature (locks keyed differently, with master key)
- 507 - Additional keys (x2)
- 530 - 110V warning light (Factory Installed)
- 540 - 220V warning light (factory installed)
- 025 - Custom door front accent color