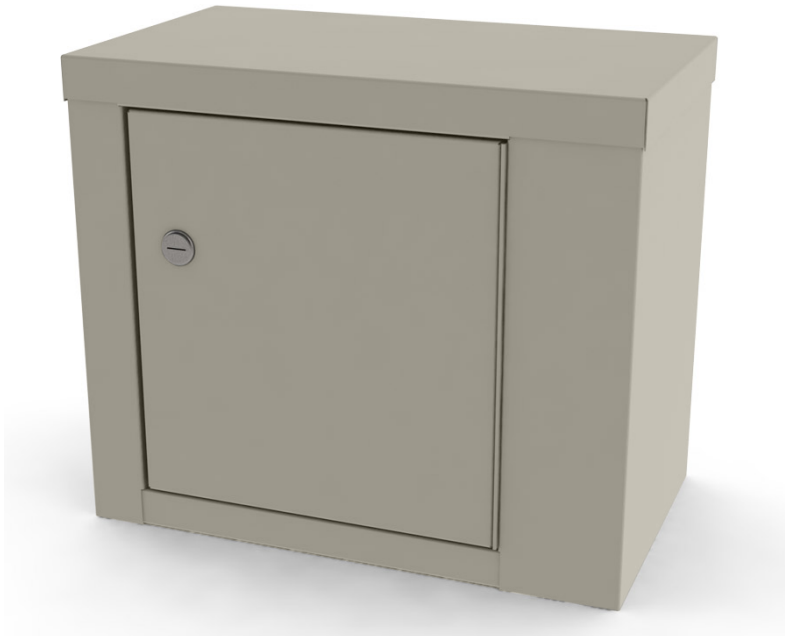


Single Door, Single Lock Narcotic Cabinet with One Shelf

One Shelf
Can be Mounted
20 Gauge Double Wall Door
Cam-style Lock with 2 Keys
3 Year Limited Warranty



Color Chart and Part Number:

7782RI River Rock	7782SN Sand Grey	7782MO	7782AD Adobe
7782ST Steel Blue	7782MI Midnight Blue	7782SG Sage	7782ON Onyx

Standard Features

- 20 gauge steel cabinet construction
- 20 gauge double wall door
- Cam-style lock with 2 keys
- Heavy duty piano style door hinge
- One shelf
- Available in all UMF Medical colors

Specifications

- 3 year limited warranty
- **Width:** 14.125" (35.9cm)
- **Height:** 12" (30.5cm)

Options

- **Depth:** 8.125" (20.6cm)
- 506 - Master key feature (locks keyed differently, with master key)
- 507 - Additional keys (x2)
- 530 - 110V warning light (factory installed)
- 540- 220V warning light (factory installed)
- 025 - Custom door front accent color