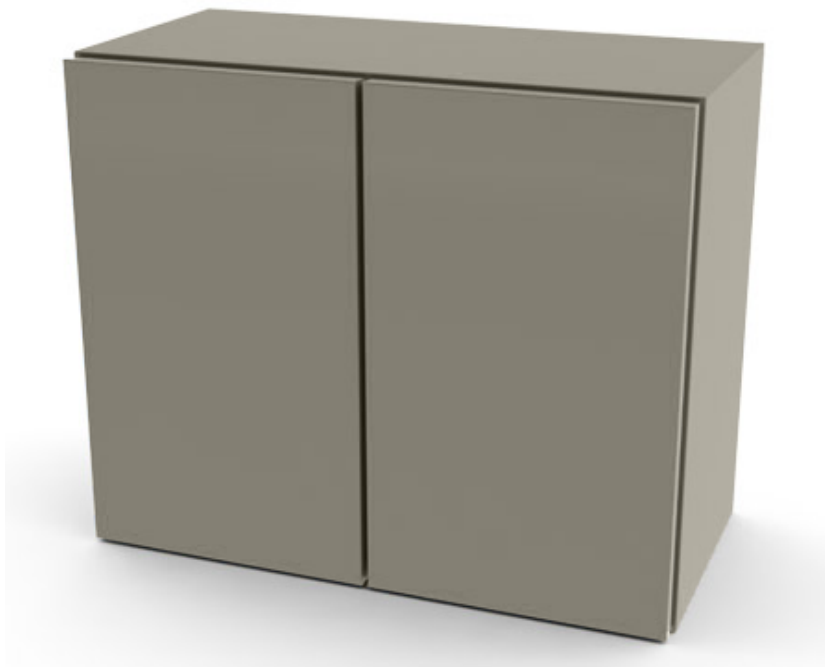


24" (61cm) Modular Wall Cabinet

All-Steel Construction
Heavy Duty Double Walled All-Steel Doors
Wall Mounting Hardware Included



Standard Features

- 20 gauge steel construction
- Commercial grade, adjustable, spring assisted door hinges
- Adjustable shelf
- Interchangeable door fronts
- Wall mounting bracket
- Drawer fronts available in all accent colors
- 3 year limited warranty

Specifications

- **Width:** 24" (61.0cm)
- **Height:** 20" (50.8cm)
- **Depth:** 11" (27.9cm)

Options

- 502 - Double door lock (Factory Installed Only)
- 507 - Additional keys (x2)
- SilverSan Anti-microbial Paint
- 025 - Custom door front accent color

Color Chart and Part Number:

6074RI River Rock	6074SN Sand Grey	6074MO	6074AD Adobe
6074ST Steel Blue	6074MI Midnight Blue	6074SG Sage	6074ON Onyx