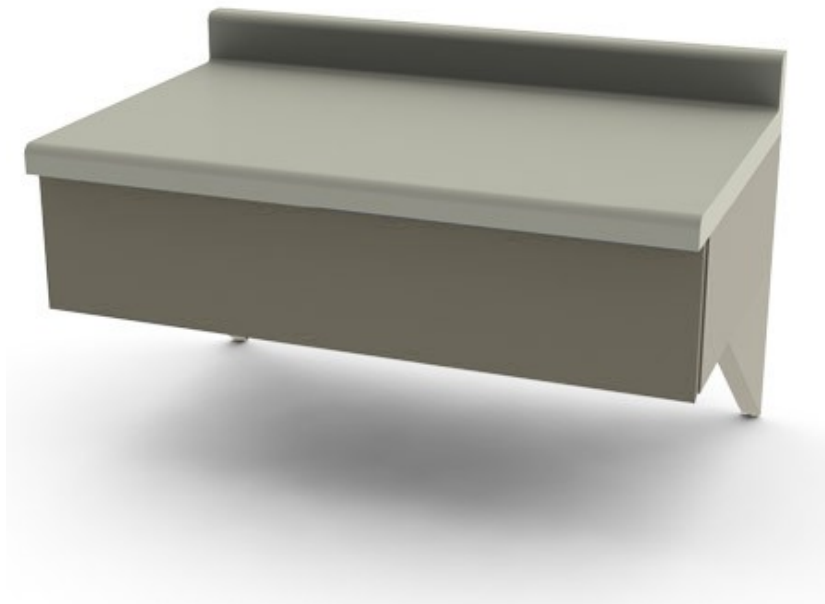


30" (76.2cm) Modular Writing Desk Unit with Drawer

All-Steel Construction
Heavy Duty All-Steel Drawer
Full extension Roller Bearing Drawer Guides
Seamless Countertop Included



Standard Features

- 20 gauge steel construction
- Full extension roller bearing drawer glides
- Seamless laminate countertop with backsplash
- Pre-drilled mounting brackets included
- Interchangeable drawer fronts
- Drawer fronts available in all accent colors
- 3 year limited warranty

Specifications

- Width:** 30" (76.2cm)
- Height:** 8.125" (20.6cm) (12" High[30.5cm] including backsplash)
- Depth:** 19" (48.3cm) to front of countertop

Options

- 505 - Single drawer lock (Factory Installed Only)
- 507 - Additional keys (x2)
- SilverSan Antimicrobial Paint
- 025 - Custom drawer front accent color

Color Chart and Part Number:

6052RI River Rock	6052SN Sand Grey	6052MO	6052AD Adobe
6052ST Steel Blue	6052MI Midnight Blue	6052SG Sage	6052ON Onyx